

REMS Helix VE

Cordless power drill/screwdriver

Powerful, handy power tool for drilling, driving in/ loosening screws and deburring pipes. For cordless and mains operation. For assembly, disassembly, repair.

Drilling in steel, stone	≤ Ø 10 mm
Drilling in wood	≤ Ø 28 mm
Drilling with tile drills, e.g. in ceramic, fine clay, granite, marble	≤ Ø 14 mm
Driving in/loosening of screws	≤ Ø 7 mm

REMS Helix VE – drilling, screw driving and deburring.

Design

Ultra light, ultra small, ultra handy. Drive machine with battery pack weighs only 1.3 kg. Can therefore be used everywhere, free hand, over head, also in very confined spaces. Optimum weight distribution for one-hand operation. Ergonomically designed housing. Drive machine with keyless quick chuck, clamping range 0.8–10 mm, right and left hand rotation. 2 continuously adjustable speed ranges from 0 to 300 rpm and 0 to 1,250 rpm, 25 torque stages plus drilling stage, high torque of 31 Nm in the low speed range for powerful screw driving. Integrated LED work light for illuminating the work place. Belt clip. For cordless and mains operation. 1 bit with double blade slot/cross-head, 50 mm long. Bit set as accessory.

Drive

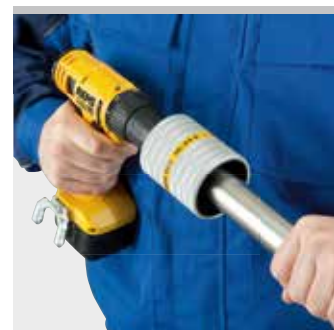
Powerful electro-mechanical drive with powerful battery motor 14.4 V, 300 W output, robust, 2-step, precision, ball bearing-mounted planetary gear, maintenance-free. Safety switch.

Vario-Electronic

Continuous electronic speed control for gentle start drilling, driving in/loosening of screws and selection of the speed suitable for the material when drilling and driving in/loosening screws. The speed can be continuously controlled by variable pressure on the safety switch from 0 to 300 or 0 to 1,250 rpm (accelerator switch).

Battery or mains operation

Li-Ion PLUS technology. Highly resistant Li-Ion 14.4 V battery with 1.5 or 3.0 Ah capacity for long service life. Light and powerful. Li-Ion 14.4 V, 3.0 Ah battery for driving in more than 1,000 screws 4 x 40 mm in wood. Operating temperature range – 10 to + 60 °C. No memory effect for maximum battery power. Rapid charger Li-Ion/Ni-Cd 220–240 V, 10.8–18 V, 65 W, for short charging times. 220–240 V/14.4 V, 33 A, voltage supply for mains operation instead of Li-Ion 14.4 V battery, as accessory.



Supply format

REMS Helix VE Set. Cordless power drill/screwdriver with Vario-Electronics (VE) for drilling in steel, stone, ≤ Ø 10 mm, wood ≤ Ø 28 mm and other materials and for driving in/loosening screws ≤ Ø 7 mm. Drive machine with keyless quick chuck, clamping range 0.8–10 mm, right and left hand rotation. Electromechanical drive with powerful battery motor 14.4 V, 300 W, 2-step robust planetary gear. 2 continuously adjustable speed ranges from 0 to 300 rpm and 0 to 1,250 rpm, 25 torque stages plus drilling stage, high torque of 31 Nm in the low speed range. Safety switch. Integrated LED work light. Belt clip. Li-Ion 14.4 V, 1.5 Ah battery, Li-Ion/Ni-Cd 220–240 V, 50–60 Hz, 10.8–18 V, 65 W. 1 bit with double blade slot/cross-head, 50 mm long. In carrying bag.

	Art.-No.
	190010

Other voltages on request.

Accessories

Description	Art.-No.
REMS REG 10–42. Outer/inner pipe deburrer for pipes Ø 10–42 mm, Ø ½–1½", see page 96	
REMS REG 10–54 E. Outer/inner pipe deburrer for pipes Ø 10–54 mm, Ø ½–2½", see page 97	
REMS tile drilling, Ø 5–14 mm, see page 290	
REMS Helix VE drive unit, without battery	190000
Battery Li-Ion 14.4 V, 1.5 Ah	571545
Battery Li-Ion 14.4 V, 3.0 Ah	571555
Rapid charger Li-Ion/Ni-Cd 220–240 V, 50–60 Hz, 10.8–18 V, 65 W	571560
Voltage supply 220–240 V/14.4 V, 50–60 Hz, 33 A, for mains operation instead of battery Li-Ion 14.4 V	571565
Carrying bag	190053
Bit set, comprising quick-change bit holder, magnetic, with automatic bit lock, 12 bits (4 Torx, 3 cross-head PH, 3 cross-head PZ, 2 slotted), in practical magazine with elastic band for fixing to wrist or to the power tool.	190051
REMS cordless LED lamp see page 105	175200



Info

