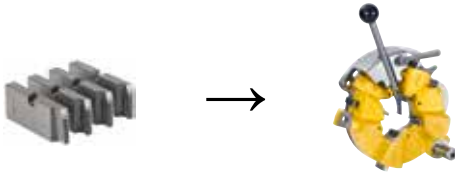


REMS dies (set)

The proven REMS quality dies with precise cutting geometry ensure an excellent start-cutting performance, easy threading and clean threads. Dies in a high-quality special-grade steel, fully tempered and hardened, for materials < 500 N/mm² (MPa) for extremely long die life.

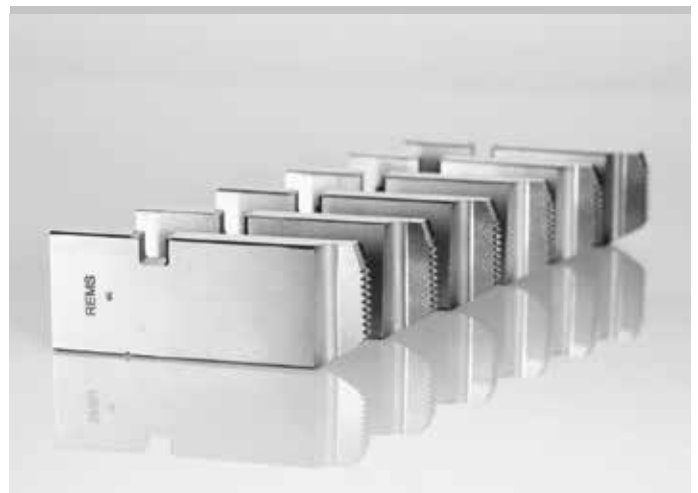
Dies for other threads (e.g. BSW) on request. HSS dies for materials that are difficult to cut ≥ 500 N/mm² (MPa) 50 % surcharge.

¹⁾ Some dies only available in HSS.

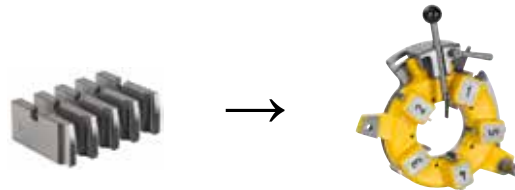


For universal automatic die head 1/16 – 2"

Thread type	Size	Art.-No.	Din.
Pipe threads R tapered, right-hand ISO 7-1, EN 10226 (DIN 2999, BSPT)	R 1/16 – 1/8 HSS ¹⁾	341401RHSS	60 520,00
	R 1/4 – 3/8	341402RWS	40 350,00
	R 1/2 – 3/4	341403RWS	40 350,00
	R 1 – 2	341404RWS	40 350,00
Pipe threads G parallel, right-hand ISO 228-1 (DIN 259, BSPP)	G 1/16 – 1/8	341406RWS	45 970,00
	G 1/4 – 3/8	341407RWS	45 970,00
	G 1/2 – 3/4	341408RWS	45 970,00
	G 1 – 2	341409RWS	45 970,00
Pipe threads NPT tapered, right-hand Taper Pipe Thread ASME B1.20.1	NPT 1/16 – 1/8 HSS ¹⁾	341411RHSS	60 520,00
	NPT 1/4 – 3/8	341412RWS	40 350,00
	NPT 1/2 – 3/4	341413RWS	40 350,00
	NPT 1 – 2	341414RWS	40 350,00
Pipe threads NPSM parallel, right-hand Straight Pipe Thread ASME B1.20.1	NPSM 1/8	341416RWS	45 970,00
	NPSM 1/4 – 3/8	341417RWS	45 970,00
	NPSM 1/2 – 3/4 HSS ¹⁾	341418RHSS	68 950,00
	NPSM 1 – 2 HSS ¹⁾	341419RHSS	68 950,00
Conduit threads Pg DIN 40430	Pg 7	341466RWS	45 970,00
	Pg 9	341467RWS	45 970,00
	Pg 11	341468RWS	45 970,00
	Pg 13.5	341469RWS	45 970,00
	Pg 16	341470RWS	45 970,00
	Pg 21	341471RWS	45 970,00
	Pg 29	341472RWS	45 970,00
	Pg 36	341473RWS	45 970,00
	Pg 42	341474RWS	45 970,00
Conduit threads M EN 60423	M 16 x 1.5	341493RWS	45 970,00
	M 20 x 1.5	341494RWS	45 970,00
	M 25 x 1.5	341495RWS	45 970,00
	M 32 x 1.5	341496RWS	45 970,00
	M 40 x 1.5	341497RWS	45 970,00
	M 50 x 1.5	341498RWS	45 970,00
	M 63 x 1.5	341499RWS	45 970,00
Metric bolt threads M ISO 261 (DIN 13)	M 6	341426RWS	45 970,00
	M 8	341427RWS	45 970,00
	M 10	341428RWS	45 970,00
	M 12	341429RWS	45 970,00
	M 14	341430RWS	45 970,00
	M 16	341431RWS	45 970,00
	M 18	341432RWS	45 970,00
	M 20	341433RWS	45 970,00
	M 22	341434RWS	45 970,00
	M 24	341435RWS	45 970,00
	M 27	341436RWS	45 970,00
	M 30	341437RWS	45 970,00
	M 33	341438RWS	49 800,00
	M 36	341439RWS	49 800,00
	M 39	341440RWS	49 800,00
	M 42	341441RWS	49 800,00
	M 45	341442RWS	49 800,00
	M 48	341443RWS	49 800,00
	M 52	341444RWS	49 800,00
	M 56 HSS ¹⁾	341445RHSS	74 690,00
M 60 HSS ¹⁾	341446RHSS	74 690,00	
Bolt threads UNC Unified Inch Screw Thread ASME B1.1	UNC 1/4 – 20 HSS ¹⁾	341476RHSS	68 950,00
	UNC 5/16 – 18	341477RWS	45 970,00
	UNC 3/8 – 16 HSS ¹⁾	341478RHSS	68 950,00
	UNC 7/16 – 14	341479RWS	45 970,00
	UNC 1/2 – 13 HSS ¹⁾	341480RHSS	68 950,00
	UNC 9/16 – 12	341481RWS	45 970,00
	UNC 5/8 – 11 HSS ¹⁾	341482RHSS	60 520,00
	UNC 3/4 – 10 HSS ¹⁾	341483RHSS	60 520,00
	UNC 7/8 – 9 HSS ¹⁾	341484RHSS	60 520,00
	UNC 1 – 8 HSS ¹⁾	341485RHSS	60 520,00
	UNC 1 1/8 – 7	341486RWS	40 350,00
	UNC 1 1/4 – 7 HSS ¹⁾	341487RHSS	60 520,00
	UNC 1 3/8 – 6	341488RWS	49 800,00
	UNC 1 1/2 – 6 HSS ¹⁾	341489RHSS	74 690,00
	UNC 1 3/4 – 5	341490RWS	40 350,00
UNC 2 – 4.5	341491RWS	40 350,00	

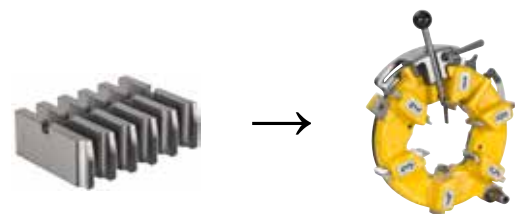


German Quality Product



For universal automatic die head 2 1/2 – 3"

Thread type	Size	Art.-No.	Din.
Pipe threads R tapered, right-hand ISO 7-1, EN 10226 (DIN 2999, BSPT)	R 2 1/2 – 3	381430RWS	56 180,00
Pipe threads G parallel, right-hand ISO 228-1 (DIN 259, BSPP)	G 2 1/2 – 3 HSS ¹⁾	381431RHSS	90 910,00
Pipe threads NPT tapered, right-hand Taper Pipe Thread ASME B1.20.1	NPT 2 1/2 – 3 HSS ¹⁾	381432RHSS	84 270,00
Pipe threads NPSM parallel, right-hand Straight Pipe Thread ASME B1.20.1	NPSM 2 1/2 – 3 HSS ¹⁾	381433RHSS	90 910,00



For universal automatic die head 2 1/2 – 4"

Thread type	Size	Art.-No.	Din.
Pipe threads R tapered, right-hand ISO 7-1, EN 10226 (DIN 2999, BSPT)	R 2 1/2 – 4	381401RWS	84 780,00
Pipe threads G parallel, right-hand ISO 228-1 (DIN 259, BSPP)	G 2 1/2 – 4 HSS ¹⁾	381405RHSS	135 100,00
Pipe threads NPT tapered, right-hand Taper Pipe Thread ASME B1.20.1	NPT 2 1/2 – 4 HSS ¹⁾	381410RHSS	127 200,00
Pipe threads NPSM parallel, right-hand Straight Pipe Thread ASME B1.20.1	NPSM 2 1/2 – 4 HSS ¹⁾	381415RHSS	135 100,00