

Ultra small, ultra compact electronic leakage detector with quick-change gas sensors for reliable detection of different gases and refrigerants. For detecting gas leaks in technical installations, pipelines, air-conditioning systems, cooling systems, vehicles, etc. with quick-change attachment GS4-LED which can also be used as a practical LED lamp.

Detection limits	
Butane (C ₄ H ₁₀)	100 ppm
Methane (CH ₄)	50 ppm
Propane (C ₃ H ₈)	50 ppm
Hydrogen (H ₂)	30 ppm
Ammonia (NH ₃)	1 ppm

Detection limits g/year in accordance with EN 14624:2020	
Hydrocarbons (HC), R-290, R-600a	1 g/year static 1 g/year dynamic
Hydrofluorocarbons (HFC)/ Hydrochlorofluorocarbons (HCFC), R-22, R-32, R-134a, R-152a, R-404a, R-407c, R-410a, R-507a	2 g/year static 2 g/year dynamic
Hydrofluorolefins (HFO), R-1234yf	2 g/year static 3 g/year dynamic

REMS Detect GS4 – reliable detection of gas and refrigerant leakages. Ultra small. Ultra light. Ultra compact. 4 quick-change gas sensors with colour coding, easy pluggable. With optical and acoustic signalling of changes in the gas concentration.

Universal use
Universally usable for early detection of gas leaks in technical installations, pipelines, air-conditioning systems, cooling systems, vehicles, etc. and for leakage testing in accordance with the F-Gas directive (EU) 2024/573.

System advantage
Just one electronic leakage detector with quick-change gas sensors for reliable detection of different gases and refrigerants. Quick-change attachment GS4-LED as a practical LED lamp.

Design
Ultra small, ultra light. Leakage detector with quick-change gas sensor only 214 mm long, weighs just 78 g. Universally usable even in places with difficult access. Strong, impact-resistant plastic housing with soft grip. Metal clip for holding securely in a shirt or jacket pocket. Flexible extension 200 mm with plug/screw connection, can be fitted without tools. Button for switching on and off as well as for manual setting of a new reference value (zero point) for subsequent measurements. This new reference value is readapted to the ambient value in the course of time when the target gas concentration is reduced. After switching on and with a gas sensor plugged, REMS Detect GS4 starts the run-in phase automatically. Status display with 2 green LEDs. Switches off after 10 minutes of inactivity.

Gas leak detection
The two LEDs flash alternately during the run-in phase, both LEDs light steadily in the measuring mode and an intermittent signal tone is emitted additionally. As the gas concentration increases, e.g. when approaching a leakage, the frequency of the signal tone increases and a yellow, orange or red LED lights in stages as an optical signal, the red LED flashes at a very high gas concentration.

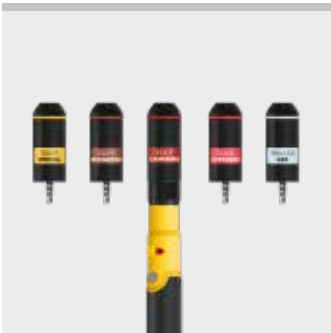
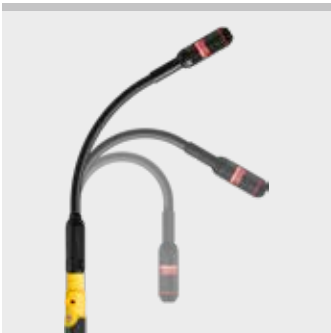
Quick-change gas sensors
Various quick-change gas sensors for reliable detection of different gases and refrigerants:

Inflammable gases:
Butane (C₄H₁₀), Methane (CH₄), Propane (C₃H₈), Hydrogen (H₂), Ammonia (NH₃)

Refrigerants:
R-22, R-32, R-134a, R-152a, R-290, R-404a, R-407c, R-410a, R-507a, R-600a, R-1234yf.

With plug connection for toolless changing, directly pluggable to the leakage detector or flexible extension 200 mm.

Quick-change gas sensor GS4-R for leakage testing in accordance with the F-Gas directive (EU) 2024/573, meets the specifications of EN 14624:2020.



German Quality Product

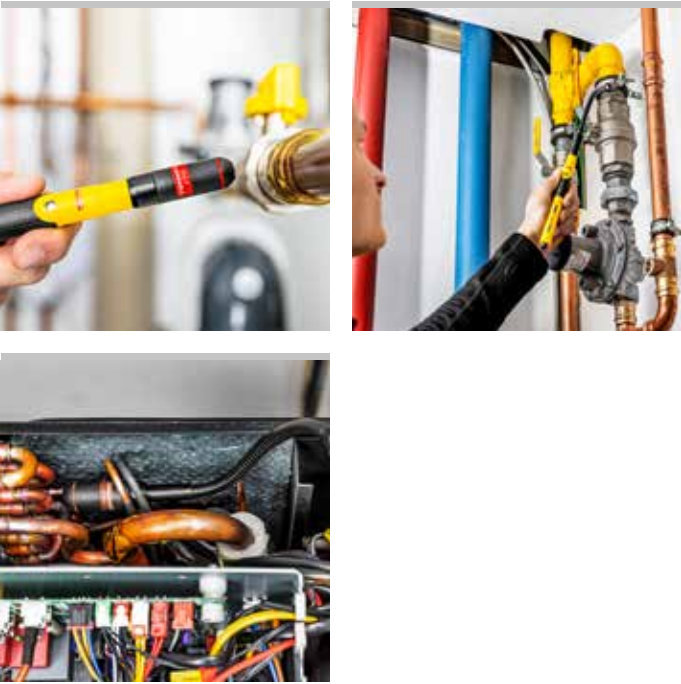


REMS Detect GS4

Electronic leakage detector
with quick-change gas sensors

Quick-change attachment GS4-LED

Quick-change attachment with plug connection for toolless changing, directly pluggable to the leakage detector or flexible extension 200 mm.



Supply format

REMS Detect GS4 Set F. Electronic leakage detector with quick-change gas sensors for reliable detection of different gases and refrigerants. Flexible extension 200 mm, quick-change gas sensor GS4-F for inflammable gases butane (C_4H_{10}), methane (CH_4), propane (C_3H_8), hydrogen (H_2), 2 batteries 1.5 V, AAA, LR3. In a strong soft bag.

	Art.-No.	Din.
	611095R	41 700,00

Supply format

REMS Detect GS4 Set R. Electronic leakage detector with quick-change gas sensor for reliable detection of different gases and refrigerants. Flexible extension 200 mm, quick-change gas sensor GS4-R for refrigerants R-22, R-32, R-134a, R-152a, R-290, R-404a, R-407c, R-410a, R-507a, R-600a, R-1234yf, for leakage testing in accordance with the F-Gas directive (EU) 2024/573, meets the specifications of EN 14624:2020. 2 batteries 1.5 V, AAA, LR3. In a strong soft bag.

	Art.-No.	Din.
	611096R	41 700,00



Accessories

Description	Art.-No.	Din.
Quick-change gas sensor GS4-F for inflammable gases butane (C_4H_{10}), methane (CH_4), propane (C_3H_8), hydrogen (H_2).	611310R	12 540,00
Quick-change gas sensor GS4-R for refrigerants R-22, R-32, R-134a, R-152a, R-290, R-404a, R-407c, R-410a, R-507a, R-600a, R-1234yf, for leakage testing in accordance with the F-Gas directive (EU) 2024/573, meets the specifications of EN 14624:2020.	611312R	12 540,00
Quick-change gas sensor GS4-S for ammonia (NH_3)	611311R	12 540,00
Quick-change gas sensor GS4-H , specially for hydrogen (H_2), no cross-sensitivity with other inflammable gases	611313R	13 410,00
Quick-change attachment GS4-LED , LED lamp for universal use, also especially for illuminating places with difficult access	611314R	6 660,00
Flexible extension 200 mm	611213R	9 940,00
Soft bag for REMS Detect GS4, flexible extension 200 mm, 7 quick-change gas sensors/attachments	611212R	3 240,00

