

REMS quick-change die heads

Accessories for REMS die stocks and other makes

REMS quick-change die heads

Proven technology, high-grade material and precise machining of die head, dies and cover form a unit and ensure an excellent start-cutting performance and easy threading. No stalling of dies. Long, precise pipe guidance for perfect pipe centering. The chip holes which become wider at the outside enable good chip flow and clean threads.

Thread type	Size	Art.-No.	€
Pipe threads R tapered, right-hand ISO 7-1, EN 10226 (DIN 2999, BSPT)	R 1/8	521000	202.41
	R 1/4	521010	176.46
	R 3/8	521020	119.37
	R 1/2	521030	124.56
	R 3/4	521040	129.75
	R 1	521050	134.94
	R 1 1/4	521060	140.13
	R 1 1/2	521070	166.08
	R 2	521080	176.46
Pipe threads R tapered, left-hand ISO 7-1, EN 10226 (DIN 2999, BSPT)	R 1/8 LH	521100	242.89
	R 1/4 LH	521110	211.75
	R 3/8 LH	521120	143.24
	R 1/2 LH	521130	149.47
	R 3/4 LH	521140	155.70
	R 1 LH	521150	161.93
	R 1 1/4 LH	521160	168.16
	R 1 1/2 LH	521170	199.30
Pipe threads NPT tapered, right-hand Taper Pipe Thread ASME B1.20.1	NPT 1/8	521200	202.41
NPT 1/4	521210	176.46	
NPT 3/8	521220	119.37	
NPT 1/2	521230	124.56	
NPT 3/4	521240	129.75	
NPT 1	521250	134.94	
NPT 1 1/4	521260	140.13	
NPT 1 1/2	521270	166.08	
NPT 2	521280	176.46	
Threads M for electric conduit EN 60423	M 16 x 1.5	521300	155.70
	M 20 x 1.5	521310	155.70
	M 25 x 1.5	521320	161.93
	M 32 x 1.5	521330	168.16
	M 40 x 1.5	521340	199.30
	M 50 x 1.5	521350	211.75



Right-hand pipe thread



Left-hand pipe thread

German Quality Product

REMS dies

Accessories for REMS die stocks

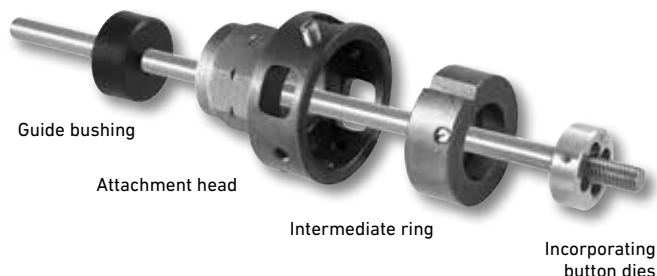
REMS dies

The proven, indestructible REMS quality dies with precise cutting geometry ensure an excellent start-cutting performance, easy threading and clean threads. Dies in a high-quality special-grade steel, fully tempered and hardened, for extremely long die life.

Thread type	Size	Art.-No.	€
Pipe threads R tapered, right-hand ISO 7-1, EN 10226 (DIN 2999, BSPT)	R 1/8	521002RWS	92.38
	R 1/4	521012RWS	87.19
	R 3/8	521022RWS	87.19
	R 1/2	521032RWS	87.19
	R 3/4	521042RWS	95.50
	R 1	521052RWS	95.50
	R 1 1/4	521062RWS	95.50
	R 1 1/2	521072RWS	95.50
	R 2	521082RWS	95.50
Pipe threads R tapered, left-hand ISO 7-1, EN 10226 (DIN 2999, BSPT)	R 1/8 LH	521102RWS	111.07
	R 1/4 LH	521112RWS	104.84
	R 3/8 LH	521122RWS	104.84
	R 1/2 LH	521132RWS	104.84
	R 3/4 LH	521142RWS	115.22
	R 1 LH	521152RWS	115.22
	R 1 1/4 LH	521162RWS	115.22
	R 1 1/2 LH	521172RWS	115.22
	R 2 LH	521182RWS	114.18
Pipe threads NPT tapered, right-hand Taper Pipe Thread ASME B1.20.1	NPT 1/8	521202RWS	92.38
	NPT 1/4	521212RWS	87.19
	NPT 3/8	521222RWS	87.19
	NPT 1/2	521232RWS	87.19
	NPT 3/4	521242RWS	95.50
	NPT 1	521252RWS	95.50
	NPT 1 1/4	521262RWS	95.50
	NPT 1 1/2	521272RWS	95.50
	NPT 2	521282RWS	95.50
Threads M for electric conduit EN 60423	M 16 x 1.5	521302RWS	115.22
	M 20 x 1.5	521312RWS	115.22
	M 25 x 1.5	521322RWS	115.22
	M 32 x 1.5	521332RWS	115.22
	M 40 x 1.5	521342RWS	115.22
	M 50 x 1.5	521352RWS	114.60



German Quality Product



Attachment heads

Attachment heads for incorporating standard, round button dies of all thread types. Locking of button dies to the attachment head with stud bolt.

Description	Size	Art.-No.	€
Attachment head for button dies	Ø 65 mm	731200	152.59
Attachment head for button dies	G 1¼	731250	158.81
Attachment head for button dies	Ø 105 mm	541401	196.18

Intermediate rings

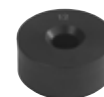
Intermediate rings for different outside diameters of button dies.

Description	Size	I.D. mm	Art.-No.	€
Intermediate rings to attachment head 731200	M 6-9	20/25	731205	85.12
	M 10-11	30	731210	85.12
	M 12-14 (Pg 7-9)	38	731220	85.12
	M 16-20 (Pg 11-13,5)	45	731230	85.12
	M 22-24 (Pg 16)	55	731240	85.12
without intermediate ring	M 27-30 (Pg 21-29)	65		
Intermediate rings to attachment head 541401	Ø 65/105 (Pg 21-29)	65	541404	96.53
	Ø 75/105	75	541406	96.53
	Ø 90/105 (Pg 36)	90	541410	96.53
without intermediate ring	Pg 42-48	105		

Guide bushings

Guide bushings for easy and concentric start-cutting.

Description	Size	Art.-No.	€
Guide bushings to attachment head 731200	Ø 6	731301	26.99
	Ø 8	731302	26.99
	Ø 10	731303	26.99
	Ø 12	731304	26.99
	Ø 14	731305	26.99
	Ø 16	731306	26.99
	Ø 18	731307	26.99
	Ø 20	731308	26.99
	Ø 22	731309	26.99
	Ø 24	731310	26.99
	Ø 27	731311	26.99
	Ø 30	731312	26.99
	Ø 12.8 (Pg 7)	731320	26.99
	Ø 15.5 (Pg 9)	731321	26.99
	Ø 18.9 (Pg 11)	731322	26.99
	Ø 20.7 (Pg 13.5)	731323	26.99
	Ø 22.8 (Pg 16)	731324	26.99
Ø 28.6 (Pg 21)	731325	26.99	
Ø 37.3 (Pg 29)	731326	26.99	
Guide bushings to attachment head 541401	Ø 28.6 (Pg 21)	541413	31.14
	Ø 37.3 (Pg 29)	541414	31.14
	Ø 47.3 (Pg 36)	541415	31.14
	Ø 54.3 (Pg 42)	541416	31.14



German Quality Product