

REMS quick-change die heads

Accessories for REMS die stocks and other makes

REMS quick-change die heads

Proven technology, high-grade material and precise machining of die head, dies and cover form a unit and ensure an excellent start-cutting performance and easy threading. No stalling of dies. Long, precise pipe guidance for perfect pipe centering. The chip holes which become wider at the outside enable good chip flow and clean threads.

| Thread type | Size | Art.-No. | € |
|---|------------|---------------|---------------|
| Pipe threads R tapered, right-hand ISO 7-1, EN 10226 (DIN 2999, BSPT) | R 1/8 | 521000 | 213,00 |
| | R 1/4 | 521010 | 186,00 |
| | R 3/8 | 521020 | 126,00 |
| | R 1/2 | 521030 | 131,00 |
| | R 3/4 | 521040 | 137,00 |
| | R 1 | 521050 | 142,00 |
| | R 1 1/4 | 521060 | 148,00 |
| | R 1 1/2 | 521070 | 175,00 |
| | R 2 | 521080 | 186,00 |
| Pipe threads R tapered, left-hand ISO 7-1, EN 10226 (DIN 2999, BSPT) | R 1/8 LH | 521100 | 256,00 |
| | R 1/4 LH | 521110 | 223,00 |
| | R 3/8 LH | 521120 | 151,00 |
| | R 1/2 LH | 521130 | 157,00 |
| | R 3/4 LH | 521140 | 164,00 |
| | R 1 LH | 521150 | 171,00 |
| | R 1 1/4 LH | 521160 | 177,00 |
| | R 1 1/2 LH | 521170 | 210,00 |
| R 2 LH | 521180 | 223,00 | |
| Pipe threads NPT tapered, right-hand Taper Pipe Thread ASME B1.20.1 | NPT 1/8 | 521200 | 213,00 |
| | NPT 1/4 | 521210 | 186,00 |
| | NPT 3/8 | 521220 | 126,00 |
| | NPT 1/2 | 521230 | 131,00 |
| | NPT 3/4 | 521240 | 137,00 |
| | NPT 1 | 521250 | 142,00 |
| | NPT 1 1/4 | 521260 | 148,00 |
| | NPT 1 1/2 | 521270 | 175,00 |
| | NPT 2 | 521280 | 186,00 |
| Threads M for electric conduit EN 60423 | M 16 x 1.5 | 521300 | 164,00 |
| | M 20 x 1.5 | 521310 | 164,00 |
| | M 25 x 1.5 | 521320 | 171,00 |
| | M 32 x 1.5 | 521330 | 177,00 |
| | M 40 x 1.5 | 521340 | 210,00 |
| | M 50 x 1.5 | 521350 | 223,00 |



Right-hand pipe thread



Left-hand pipe thread

German Quality Product

REMS dies

Accessories for REMS die stocks

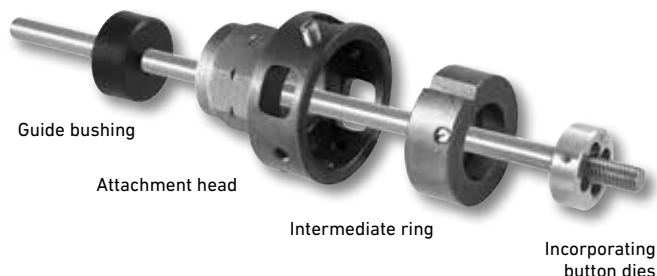
REMS dies

The proven, indestructible REMS quality dies with precise cutting geometry ensure an excellent start-cutting performance, easy threading and clean threads. Dies in a high-quality special-grade steel, fully tempered and hardened, for extremely long die life.

| Thread type | Size | Art.-No. | € |
|---|------------|-----------|---------------|
| Pipe threads R tapered, right-hand ISO 7-1, EN 10226 (DIN 2999, BSPT) | R 1/8 | 521002RWS | 97,00 |
| | R 1/4 | 521012RWS | 91,60 |
| | R 3/8 | 521022RWS | 91,60 |
| | R 1/2 | 521032RWS | 91,60 |
| | R 3/4 | 521042RWS | 101,00 |
| | R 1 | 521052RWS | 101,00 |
| | R 1 1/4 | 521062RWS | 101,00 |
| | R 1 1/2 | 521072RWS | 101,00 |
| | R 2 | 521082RWS | 101,00 |
| Pipe threads R tapered, left-hand ISO 7-1, EN 10226 (DIN 2999, BSPT) | R 1/8 LH | 521102RWS | 117,00 |
| | R 1/4 LH | 521112RWS | 111,00 |
| | R 3/8 LH | 521122RWS | 111,00 |
| | R 1/2 LH | 521132RWS | 111,00 |
| | R 3/4 LH | 521142RWS | 121,00 |
| | R 1 LH | 521152RWS | 121,00 |
| | R 1 1/4 LH | 521162RWS | 121,00 |
| | R 1 1/2 LH | 521172RWS | 121,00 |
| | R 2 LH | 521182RWS | 120,00 |
| Pipe threads NPT tapered, right-hand Taper Pipe Thread ASME B1.20.1 | NPT 1/8 | 521202RWS | 97,00 |
| | NPT 1/4 | 521212RWS | 91,60 |
| | NPT 3/8 | 521222RWS | 91,60 |
| | NPT 1/2 | 521232RWS | 91,60 |
| | NPT 3/4 | 521242RWS | 101,00 |
| | NPT 1 | 521252RWS | 101,00 |
| | NPT 1 1/4 | 521262RWS | 101,00 |
| | NPT 1 1/2 | 521272RWS | 101,00 |
| | NPT 2 | 521282RWS | 101,00 |
| Threads M for electric conduit EN 60423 | M 16 x 1.5 | 521302RWS | 121,00 |
| | M 20 x 1.5 | 521312RWS | 121,00 |
| | M 25 x 1.5 | 521322RWS | 121,00 |
| | M 32 x 1.5 | 521332RWS | 121,00 |
| | M 40 x 1.5 | 521342RWS | 121,00 |
| | M 50 x 1.5 | 521352RWS | 121,00 |



German Quality Product



Attachment heads

Attachment heads for incorporating standard, round button dies of all thread types. Locking of button dies to the attachment head with stud bolt.

| Description | Size | Art.-No. | € |
|---------------------------------|----------|----------|---------------|
| Attachment head for button dies | Ø 65 mm | 731200 | 161,00 |
| Attachment head for button dies | G 1¼ | 731250 | 167,00 |
| Attachment head for button dies | Ø 105 mm | 541401 | 206,00 |

Intermediate rings

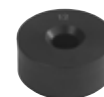
Intermediate rings for different outside diameters of button dies.

| Description | Size | I.D. mm | Art.-No. | € |
|--|----------------------|---------|----------|---------------|
| Intermediate rings to attachment head 731200 | M 6-9 | 20/25 | 731205 | 89,40 |
| | M 10-11 | 30 | 731210 | 89,40 |
| | M 12-14 (Pg 7-9) | 38 | 731220 | 89,40 |
| | M 16-20 (Pg 11-13,5) | 45 | 731230 | 89,40 |
| | M 22-24 (Pg 16) | 55 | 731240 | 89,40 |
| without intermediate ring | M 27-30 (Pg 21-29) | 65 | | |
| Intermediate rings to attachment head 541401 | Ø 65/105 (Pg 21-29) | 65 | 541404 | 102,00 |
| | Ø 75/105 | 75 | 541406 | 102,00 |
| | Ø 90/105 (Pg 36) | 90 | 541410 | 102,00 |
| without intermediate ring | Pg 42-48 | 105 | | |

Guide bushings

Guide bushings for easy and concentric start-cutting.

| Description | Size | Art.-No. | € |
|--|------------------|--------------|--------------|
| Guide bushings to attachment head 731200 | Ø 6 | 731301 | 28,40 |
| | Ø 8 | 731302 | 28,40 |
| | Ø 10 | 731303 | 28,40 |
| | Ø 12 | 731304 | 28,40 |
| | Ø 14 | 731305 | 28,40 |
| | Ø 16 | 731306 | 28,40 |
| | Ø 18 | 731307 | 28,40 |
| | Ø 20 | 731308 | 28,40 |
| | Ø 22 | 731309 | 28,40 |
| | Ø 24 | 731310 | 28,40 |
| | Ø 27 | 731311 | 28,40 |
| | Ø 30 | 731312 | 28,40 |
| | Ø 12.8 (Pg 7) | 731320 | 28,40 |
| | Ø 15.5 (Pg 9) | 731321 | 28,40 |
| | Ø 18.9 (Pg 11) | 731322 | 28,40 |
| | Ø 20.7 (Pg 13.5) | 731323 | 28,40 |
| | Ø 22.8 (Pg 16) | 731324 | 28,40 |
| Ø 28.6 (Pg 21) | 731325 | 28,40 | |
| Ø 37.3 (Pg 29) | 731326 | 28,40 | |
| Guide bushings to attachment head 541401 | Ø 28.6 (Pg 21) | 541413 | 32,70 |
| | Ø 37.3 (Pg 29) | 541414 | 32,70 |
| | Ø 47.3 (Pg 36) | 541415 | 32,70 |
| | Ø 54.3 (Pg 42) | 541416 | 32,70 |



German Quality Product