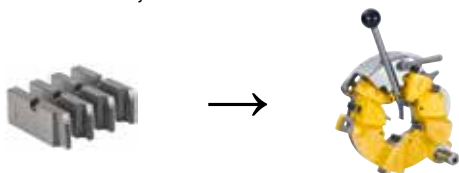


REMS dies (set)

The proven REMS quality dies with precise cutting geometry ensure an excellent start-cutting performance, easy threading and clean threads. Dies in a high-quality special-grade steel, fully tempered and hardened, for materials < 500 N/mm² (MPa) for extremely long die life.

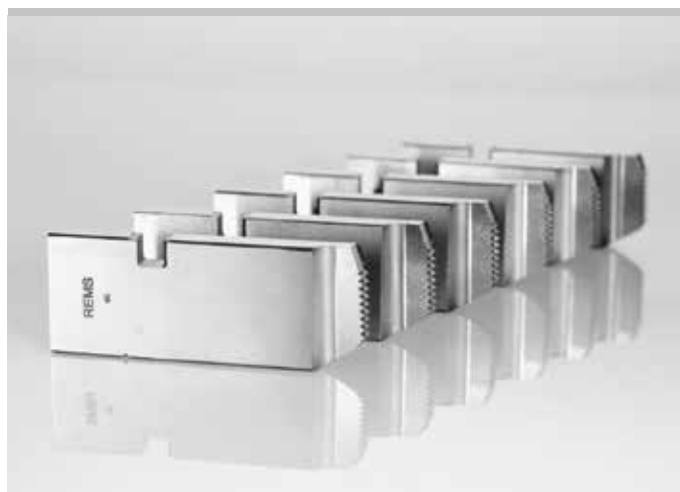
Dies for other threads (e.g. BSW) on request. HSS dies for materials that are difficult to cut ≥ 500 N/mm² (MPa) 50 % surcharge.

¹⁾ Some dies only available in HSS.

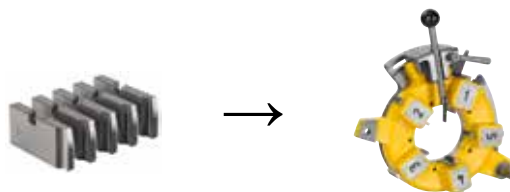


For universal automatic die head 1/16 – 2"

Thread type	Size	Art.-No.	€
Pipe threads R tapered, right-hand ISO 7-1, EN 10226 (DIN 2999, BSPT)	R 1/16 – 1/8 HSS ¹⁾	341401RHSS	530,00
	R 1/4 – 3/8	341402RWS	348,00
	R 1/2 – 3/4	341403RWS	348,00
	R 1 – 2	341404RWS	348,00
Pipe threads G parallel, right-hand ISO 228-1 (DIN 259, BSPP)	G 1/16 – 1/8	341406RWS	397,00
	G 1/4 – 3/8	341407RWS	397,00
	G 1/2 – 3/4	341408RWS	397,00
	G 1 – 2	341409RWS	397,00
Pipe threads NPT tapered, right-hand Taper Pipe Thread ASME B1.20.1	NPT 1/16 – 1/8 HSS ¹⁾	341411RHSS	530,00
	NPT 1/4 – 3/8	341412RWS	348,00
	NPT 1/2 – 3/4	341413RWS	348,00
	NPT 1 – 2	341414RWS	348,00
Pipe threads NPSM parallel, right-hand Straight Pipe Thread ASME B1.20.1	NPSM 1/8	341416RWS	397,00
	NPSM 1/4 – 3/8	341417RWS	397,00
	NPSM 1/2 – 3/4 HSS ¹⁾	341418RHSS	600,00
	NPSM 1 – 2 HSS ¹⁾	341419RHSS	600,00
Conduit threads Pg DIN 40430	Pg 7	341466RWS	397,00
	Pg 9	341467RWS	397,00
	Pg 11	341468RWS	397,00
	Pg 13.5	341469RWS	397,00
	Pg 16	341470RWS	397,00
	Pg 21	341471RWS	397,00
	Pg 29	341472RWS	397,00
	Pg 36	341473RWS	397,00
	Pg 42	341474RWS	397,00
	Pg 48	341475RWS	397,00
Conduit threads M EN 60423	M 16 x 1.5	341493RWS	397,00
	M 20 x 1.5	341494RWS	397,00
	M 25 x 1.5	341495RWS	397,00
	M 32 x 1.5	341496RWS	397,00
	M 40 x 1.5	341497RWS	397,00
	M 50 x 1.5	341498RWS	397,00
	M 63 x 1.5	341499RWS	397,00
Metric bolt threads M ISO 261 (DIN 13)	M 6	341426RWS	397,00
	M 8	341427RWS	397,00
	M 10	341428RWS	397,00
	M 12	341429RWS	397,00
	M 14	341430RWS	397,00
	M 16	341431RWS	397,00
	M 18	341432RWS	397,00
	M 20	341433RWS	397,00
	M 22	341434RWS	397,00
	M 24	341435RWS	397,00
	M 27	341436RWS	397,00
	M 30	341437RWS	397,00
	M 33	341438RWS	430,00
	M 36	341439RWS	430,00
	M 39	341440RWS	430,00
	M 42	341441RWS	430,00
	M 45	341442RWS	430,00
	M 48	341443RWS	430,00
	M 52	341444RWS	430,00
	M 56 HSS ¹⁾	341445RHSS	650,00
M 60 HSS ¹⁾	341446RHSS	650,00	
Bolt threads UNC Unified Inch Screw Thread ASME B1.1	UNC 1/4 – 20 HSS ¹⁾	341476RHSS	600,00
	UNC 5/16 – 18	341477RWS	397,00
	UNC 3/8 – 16 HSS ¹⁾	341478RHSS	600,00
	UNC 7/16 – 14	341479RWS	397,00
	UNC 1/2 – 13 HSS ¹⁾	341480RHSS	600,00
	UNC 9/16 – 12	341481RWS	397,00
	UNC 5/8 – 11 HSS ¹⁾	341482RHSS	530,00
	UNC 3/4 – 10 HSS ¹⁾	341483RHSS	530,00
	UNC 7/8 – 9 HSS ¹⁾	341484RHSS	530,00
	UNC 1 – 8 HSS ¹⁾	341485RHSS	530,00
	UNC 1 1/8 – 7	341486RWS	348,00
	UNC 1 1/4 – 7 HSS ¹⁾	341487RHSS	530,00
	UNC 1 3/8 – 6	341488RWS	430,00
	UNC 1 1/2 – 6 HSS ¹⁾	341489RHSS	650,00
	UNC 1 3/4 – 5	341490RWS	348,00
UNC 2 – 4.5	341491RWS	348,00	

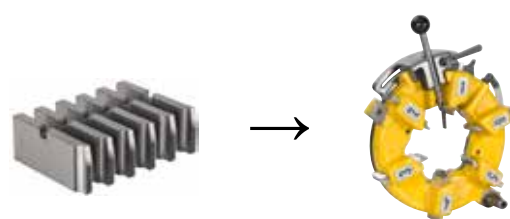


German Quality Product



For universal automatic die head 2 1/2 – 3"

Thread type	Size	Art.-No.	€
Pipe threads R tapered, right-hand ISO 7-1, EN 10226 (DIN 2999, BSPT)	R 2 1/2 – 3	381430RWS	485,00
Pipe threads G parallel, right-hand ISO 228-1 (DIN 259, BSPP)	G 2 1/2 – 3 HSS ¹⁾	381431RHSS	790,00
Pipe threads NPT tapered, right-hand Taper Pipe Thread ASME B1.20.1	NPT 2 1/2 – 3 HSS ¹⁾	381432RHSS	730,00
Pipe threads NPSM parallel, right-hand Straight Pipe Thread ASME B1.20.1	NPSM 2 1/2 – 3 HSS ¹⁾	381433RHSS	790,00



For universal automatic die head 2 1/2 – 4"

Thread type	Size	Art.-No.	€
Pipe threads R tapered, right-hand ISO 7-1, EN 10226 (DIN 2999, BSPT)	R 2 1/2 – 4	381401RWS	740,00
Pipe threads G parallel, right-hand ISO 228-1 (DIN 259, BSPP)	G 2 1/2 – 4 HSS ¹⁾	381405RHSS	1 170,00
Pipe threads NPT tapered, right-hand Taper Pipe Thread ASME B1.20.1	NPT 2 1/2 – 4 HSS ¹⁾	381410RHSS	1 100,00
Pipe threads NPSM parallel, right-hand Straight Pipe Thread ASME B1.20.1	NPSM 2 1/2 – 4 HSS ¹⁾	381415RHSS	1 170,00