

# REMS Mini-Press S 22 V ACC

Cordless radial press 22 kN with automatic circuit control

Universal, super handy electric tool with automatic circuit control for all common pressfitting systems. Li-Ion 22V Technology. For battery and corded operation.

Pipe pressing joints	Ø 10 – 40 mm
	Ø 3/8 – 1 1/4"

Complete range of REMS pressing tongs Mini/pressing rings for all common pressfitting systems, see page 152–183.

**REMS Mini-Press S 22 V ACC – universal up to Ø 40 mm. Super light, super small, super handy, ultra fast. Pressing under 4 s. With automatic circuit control, Automatic locking of pressing tongs. Li-Ion 21.6 V, 2.5 Ah battery for approx. 390 pressings Viega Profipress DN 15 with one battery charge\*.**

## Pressing tongs for all common systems

Complete assortment of REMS pressing tongs Mini/pressing rings for all common pressfitting systems (page 152–183). Can be driven by all REMS radial presses 22 kN. Highly durable pressing tongs/pressing rings made of forged, tenacious, specially hardened special steel. Pressing contours of REMS pressing tongs/pressing rings are system-specific and correspond to the respective pressfitting system. Thus perfect system-conformity, safe press jointing. Adapter tongs required for driving the REMS S (PR-2B) pressing rings, see page 183. All pressing rings S (PR-2B) marked with \*\* can also be driven with the manual radial press REMS Eco-Press using the adapter tong Z8.

Very compact design and low weight of the REMS Mini pressing tongs due to special arrangement of the pressing tongs connection (**Patent EP 1 952 948**). Recesses in the pressing jaws for safe guidance of the connecting plate for offset-free pressing (**Patent EP 2 347 862**).

## Design

Super light, super small, super handy. Drive unit with battery only 2.6 kg. Works anywhere, free-hand, overhead, also in particularly tight areas. Optimum weight distribution for single-hand operation. Drive unit with inserted pressing tongs can be put down on the battery ready to pick up. Ergonomically designed housing with soft grip. LED work light for illuminating the work place. Swivelling pressing tongs seat, rotation angle > 360°. Secure seating of pressing tongs/adapter tongs by automatic locking.

## Pressing operation by touch-control with ACC

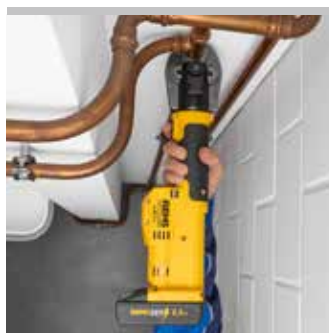
For reliable service, operating and functional safety. Automatic retraction after completion of pressing operation (automatic circuit control). Ultra fast Pressing under 4 s.

## Drive

Enormous thrust and pressing force for fast and perfect press jointing. Thrust force 22 kN. Powerful electro-hydraulic drive with powerful battery motor 21.6 V, 380 W output, robust planetary gear, eccentric reciprocating pump and compact high power hydraulic system. Safety tip switch.

## Battery or mains operation

Li-Ion 22V Technology. Highly resistant Li-Ion 21.6 V battery with 2.5, 4.4, 5.0 or 9.0 Ah capacity, for long service life. Light and powerful. Li-Ion 21.6 V, 2.5 Ah batteries for approx. 390 pressings, 4.4 Ah for approx. 685 pressings, 5.0 Ah for approx. 780 pressings, 9.0 Ah for approx. 1400 pressings Viega Profipress DN 15 with one battery charge\*. Graduated charging status check by coloured LEDs. Operating temperature range – 10 to + 60 °C. No memory effect for maximum battery power. Rapid charger 100–240 V, 90 W. Rapid charger 100–240 V, 290 W, for shorter charging times, as accessory. Voltage supply 220–240 V/21.6 V, 15 A output, for mains operation instead of Li-Ion battery 21.6 V, as accessory.



German Quality Product





## Supply format

**REMS Mini-Press S 22 V ACC Basic-Pack.** Cordless radial press 22 kN with automatic circuit control for producing pipe pressing joints Ø 10–40 mm, Ø ¾–1 ¼". For operating with REMS pressing tongs Mini/pressing rings. Swivelling pressing tongs seat with automatic locking. Electro-hydraulic drive with powerful battery motor 21.6 V, 380 W, robust planetary gear, eccentric reciprocating pump and compact high power hydraulic system. Safety tip switch. LED work light. Battery Li-Ion 21.6 V, 2.5 Ah, rapid charger 220–240 V or 110 V, 50–60 Hz, 70 W.

Version	Art.-No.	€
In sturdy steel case.	578015R220	<b>1 785,36</b>
In L-Boxx system case.	578016R220	<b>1 826,88</b>

Other voltages on request.

## Accessories

Description	Art.-No.	€
<b>REMS pressing tongs Mini/pressing rings</b> see page 152–183.		
<b>Adapter tongs Mini Z8</b> for driving REMS pressing rings S (PR-2B)	574700R	<b>144,28</b>
<b>REMS cropping tongs Mini</b> for threaded rods see page 184.		
<b>REMS Mini-Press S 22 V ACC drive unit,</b> without battery	578003R22	<b>1 266,36</b>
<b>Battery Li-Ion 21.6 V, 2.5 Ah</b>	571571R22	<b>258,46</b>
<b>Battery Li-Ion 21.6 V, 4.4 Ah</b>	571574R22	<b>372,64</b>
<b>Battery Li-Ion 21.6 V, 5.0 Ah</b>	571581R22	<b>310,36</b>
<b>Battery Li-Ion 21.6 V, 9.0 Ah</b>	571583R22	<b>414,16</b>
<b>Rapid charger 100–240 V, 50–60 Hz, 90 W</b>	571585R220	<b>175,42</b>
<b>Rapid charger 100–240 V, 50–60 Hz, 290 W</b>	571587R220	<b>414,16</b>
<b>Voltage supply 220–240 V/21.6 V, 50–60 Hz, 15 A,</b> for mains operation instead of battery Li-Ion 21.6 V.	571567R220	<b>414,16</b>
<b>Steel case with inlay</b>	578290R	<b>110,03</b>
<b>L-Boxx system case with inserts</b>	578299R	<b>146,36</b>
<b>REMS Lumen 2800 22 V</b> , cordless LED flood light, see page 111		

