

# REMS FG4500 C

Electronic flue gas analyser and pressure testing device with Connected functionality via Bluetooth or USB

Universal, compact, handy electronic measuring device with Connected functionality via Bluetooth or USB. For flue gas analysis and pressure testing with compressed air/inert gas or water. For battery and corded operation.

Flue gas analysis in accordance with EN 50379 Part 1 and 3

Pressure testing with compressed air/inert gas  $p \leq 0.4 \text{ MPa}/4 \text{ bar}$

Pressure testing with water  $p \leq 2.5 \text{ MPa}/25 \text{ bar}$

Individual check lists, e.g. firing installation show, house show

For functions/applications, see page 161.

For a wide range of accessories, see pages 158–160.

## REMS FG4500 C – Compact. Handy. Light. Universally for flue gas analysis and pressure testing with compressed air/inert gas or water.

### Universal use

Just **one** device for flue gas analysis and pressure testing with compressed air/inert gas or water, e.g. drinking water installations, radiator and area heating systems, gas and liquid gas installations.

### Design

Compact, handy electronic flue gas analyser and pressure testing device, ultra light, for one-hand operation, measuring instrument weighs only 425 g. Sturdy, impact-resistant plastic housing with ergonomically shaped handle. Internal gas sensors  $\text{O}_2$ , CO and internal pressure sensor  $\leq 150 \text{ hPa}/\text{mbar}$ . Gas processing cartridge made of impact-resistant, shock-proof plastic, firmly integrated into the housing and therefore safe from impact, with large viewing windows, with quick-release catches for easy cleaning of the condensate tank and fast filter replacement. Bayonet connection socket P for flue gas probe FG4500 for draught measurement or for pressure hose PX/FG,  $\varnothing 5 \text{ mm}$ , e.g. for pressure testing. Bayonet connection socket G for flue gas probe FG4500 for flue gas analysis. Jack for flue gas probe FG4500 for temperature measurement or for electronic pressure sensors for pressure testing. USB-C port for direct connection to a PC or laptop or for charging the Li-Ion 3.7 V, 2.7 Ah battery. Bluetooth interface for connecting a printer. Fastening kit, consisting of Velcro tape for easy fastening of the device, e.g. to a pipe or another section, with an eye for hanging up, e.g. on a nail or hook as well as a strong, screw-on magnet. Power supply unit/charger 100–240 V.

### Input and control unit with 3.5" colour display

Input and control unit with 3.5" colour display with touch function and modern TFT LCD technology, 89 mm screen diagonal,  $320 \times 240$  pixels. On/Off button. User-friendly menu guidance takes you step by step through the testing process. Easy to understand operating instructions can be displayed at the start of a function on request, supplemented by context-related help and visual feedbacks for support. 3 different measuring and test programs in 16 languages. Language, date, time, key tones, screen brightness, show help, automatic summer time, unit of pressure bar/Pa, soot factor input, boiler temperature and oil derivatives, draught measurement, calorific value, fuels, mean value measurement, footer texts, e.g. company, settable. Display of notices (annual inspection and periodic testing, battery state, firmware version, serial number, etc. Download and installation of new firmware versions via PC or laptop. Switch-off in case of inactivity settable in 4 stages.

### Battery or mains operation

Li-Ion technology. Measuring instrument with integrated Li-Ion battery 3.7 V, 2.7 Ah Light and powerful. High energy density for approx. 8 hours continuous operation. Operation on the mains is possible during the charging process. Power supply/charger 100–240V, 7.5W, with USB port and cable USB-C to USB-A for connecting to the power supply/charger, laptop or another power supply. No memory effect for maximum battery power.

### Flue gas probe

Light, handy flue gas probe with thermocouple, probe tube  $\varnothing 6 \text{ mm}$ , 240 mm long. Probe hose with probe lead, 1.5 m long, very flexible, for easy handling and large working radius. Flue gas probe FG4500 flex, with temperature sensor, flexible probe tube  $\varnothing 8 \text{ mm}$ , 240 mm long, as an accessory.

### Pressure hoses, electronic pressure sensors

Pressure hose PX/FG,  $\varnothing 5 \text{ mm}$  for measuring gas and flow pressure and for pressure testing with compressed air/inert gas  $\leq 150 \text{ hPa}/\text{mbar}$ . Electronic pressure sensor  $\leq 0.35 \text{ MPa}/3.5 \text{ bar}$  for pressure testing with compressed air/inert gas  $\leq 0.35 \text{ MPa}/3.5 \text{ bar}$ . Electronic pressure sensor  $\leq 2.5 \text{ MPa}/25 \text{ bar}$  for pressure testing with compressed air/inert gas  $\leq 0.4 \text{ MPa}/4 \text{ bar}$  or with liquid  $\leq 2.5 \text{ MPa}/25 \text{ bar}$ . Compact manual compressed air pump  $\leq 0.4 \text{ MPa}/4 \text{ bar}$ , double-sealed for fast, accurate pressure build-up  $\leq 0.4 \text{ MPa}/4 \text{ bar}$ , with connection for Schrader valve.



German Quality Product



**REMS mCon App**  
Free application software from the Apple App Store or Android App at Google Play.

## Time/pressure diagram

Time/pressure diagram for recording the pressure curve over the complete testing time for easy assessment of the tightness.

## Functions/applications

Electronic flue gas analyser and pressure testing devices FG4500 C and FG7500 C with numerous functions for different applications, see product comparison on page 161.

## Logging

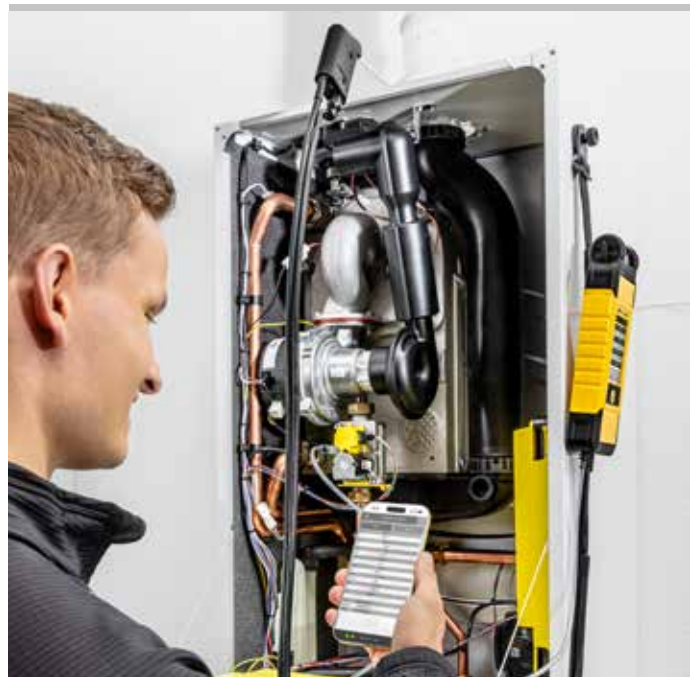
Results of the measuring and test programs are saved with date, time and log number in the selected language and can be printed, stored or sent for documentation. Printer with Bluetooth or IR interface for direct log printing, as an accessory. Additions to saved data, e.g. customer name, project number, tester, are possible on external devices (e.g. PC, laptop, tablet-PC, Smartphone).

## Connected-functionality via Bluetooth with REMS mCon App

If a mobile terminating device is connected via Bluetooth, many different functions are available with the REMS mCon app. For functions/applications, see page 161.

## Connected functionality via USB

If a PC or laptop is connected via USB, many different functions are available with the REMS PC-Software PC200P. For functions/applications, see page 161.



## Supply format

**REMS FG4500 C Set.** Electronic flue gas analyser and pressure testing device with Connected functionality via Bluetooth or USB. Internal gas sensors O<sub>2</sub>, CO and internal pressure sensor ≤ 150 hPa/mbar. Gas processing cartridge. Flue gas probe FG4500 with temperature sensor. 10 filter fleece pads FG4500, 5 filter discs FG4500, pressure hose PX/FG, Ø 5 mm, 1 m long, fastening kit, cable USB-C to USB-A, power supply/charger 100–240 V, 50–60 Hz, 7.5W, 5V, 1.5A. In L-Boxx system case.

	Art.-No.	€
	610050R220	1 160,00

## Accessories

### Description

**For functions/applications,** see page 161

**For accessories,** see page 158–160

