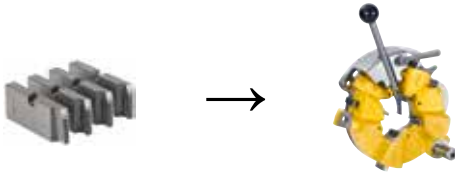


REMS dies (set)

The proven REMS quality dies with precise cutting geometry ensure an excellent start-cutting performance, easy threading and clean threads. Dies in a high-quality special-grade steel, fully tempered and hardened, for materials < 500 N/mm² (MPa) for extremely long die life.

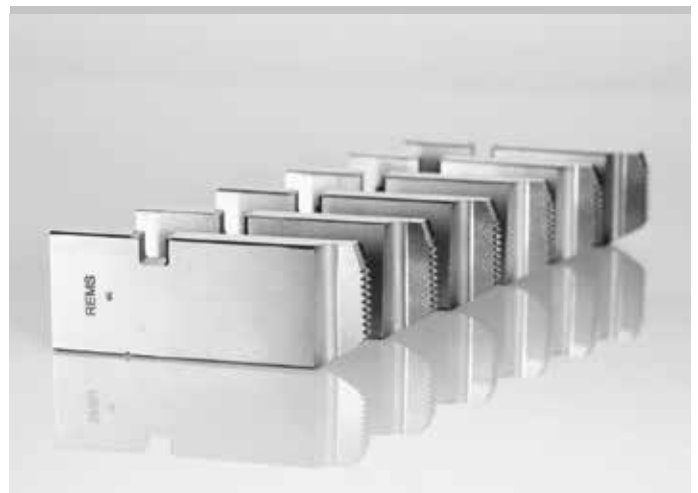
Dies for other threads (e.g. BSW) on request. HSS dies for materials that are difficult to cut ≥ 500 N/mm² (MPa) 50 % surcharge.

¹⁾ Some dies only available in HSS.

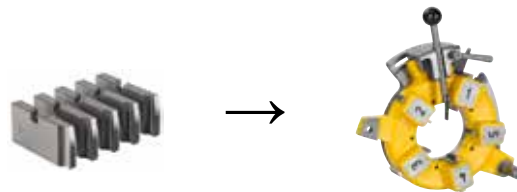


For universal automatic die head 1/16 - 2"

Thread type	Size	Art.-No.	KM
Pipe threads R tapered, right-hand ISO 7-1, EN 10226 (DIN 2999, BSPT)	R 1/16 - 1/8 HSS ¹⁾	341401RHSS	995,00
	R 1/4 - 3/8	341402RWS	664,00
	R 1/2 - 3/4	341403RWS	664,00
	R 1 - 2	341404RWS	664,00
Pipe threads G parallel, right-hand ISO 228-1 (DIN 259, BSPP)	G 1/16 - 1/8	341406RWS	756,00
	G 1/4 - 3/8	341407RWS	756,00
	G 1/2 - 3/4	341408RWS	756,00
	G 1 - 2	341409RWS	756,00
Pipe threads NPT tapered, right-hand Taper Pipe Thread ASME B1.20.1	NPT 1/16 - 1/8 HSS ¹⁾	341411RHSS	995,00
	NPT 1/4 - 3/8	341412RWS	664,00
	NPT 1/2 - 3/4	341413RWS	664,00
	NPT 1 - 2	341414RWS	664,00
Pipe threads NPSM parallel, right-hand Straight Pipe Thread ASME B1.20.1	NPSM 1/8	341416RWS	756,00
	NPSM 1/4 - 3/8	341417RWS	756,00
	NPSM 1/2 - 3/4 HSS ¹⁾	341418RHSS	1.140,00
	NPSM 1 - 2 HSS ¹⁾	341419RHSS	1.140,00
Conduit threads Pg DIN 40430	Pg 7	341466RWS	756,00
	Pg 9	341467RWS	756,00
	Pg 11	341468RWS	756,00
	Pg 13.5	341469RWS	756,00
	Pg 16	341470RWS	756,00
	Pg 21	341471RWS	756,00
	Pg 29	341472RWS	756,00
	Pg 36	341473RWS	756,00
	Pg 42	341474RWS	756,00
	Pg 48	341475RWS	756,00
Conduit threads M EN 60423	M 16 x 1.5	341493RWS	756,00
	M 20 x 1.5	341494RWS	756,00
	M 25 x 1.5	341495RWS	756,00
	M 32 x 1.5	341496RWS	756,00
	M 40 x 1.5	341497RWS	756,00
	M 50 x 1.5	341498RWS	756,00
	M 63 x 1.5	341499RWS	756,00
Metric bolt threads M ISO 261 (DIN 13)	M 6	341426RWS	756,00
	M 8	341427RWS	756,00
	M 10	341428RWS	756,00
	M 12	341429RWS	756,00
	M 14	341430RWS	756,00
	M 16	341431RWS	756,00
	M 18	341432RWS	756,00
	M 20	341433RWS	756,00
	M 22	341434RWS	756,00
	M 24	341435RWS	756,00
	M 27	341436RWS	756,00
	M 30	341437RWS	756,00
	M 33	341438RWS	819,00
	M 36	341439RWS	819,00
	M 39	341440RWS	819,00
	M 42	341441RWS	819,00
	M 45	341442RWS	819,00
	M 48	341443RWS	819,00
	M 52	341444RWS	819,00
	M 56 HSS ¹⁾	341445RHSS	1.230,00
	M 60 HSS ¹⁾	341446RHSS	1.230,00
Bolt threads UNC Unified Inch Screw Thread ASME B1.1	UNC 1/4 - 20 HSS ¹⁾	341476RHSS	1.140,00
	UNC 5/16 - 18	341477RWS	756,00
	UNC 3/8 - 16 HSS ¹⁾	341478RHSS	1.140,00
	UNC 7/16 - 14	341479RWS	756,00
	UNC 1/2 - 13 HSS ¹⁾	341480RHSS	1.140,00
	UNC 9/16 - 12	341481RWS	756,00
	UNC 5/8 - 11 HSS ¹⁾	341482RHSS	995,00
	UNC 3/4 - 10 HSS ¹⁾	341483RHSS	995,00
	UNC 7/8 - 9 HSS ¹⁾	341484RHSS	995,00
	UNC 1 - 8 HSS ¹⁾	341485RHSS	995,00
	UNC 1 1/8 - 7	341486RWS	664,00
	UNC 1 1/4 - 7 HSS ¹⁾	341487RHSS	995,00
	UNC 1 3/8 - 6	341488RWS	819,00
	UNC 1 1/2 - 6 HSS ¹⁾	341489RHSS	1.230,00
	UNC 1 3/4 - 5	341490RWS	664,00
	UNC 2 - 4.5	341491RWS	664,00

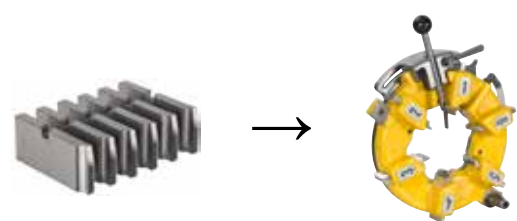


German Quality Product



For universal automatic die head 2 1/2 - 3"

Thread type	Size	Art.-No.	KM
Pipe threads R tapered, right-hand ISO 7-1, EN 10226 (DIN 2999, BSPT)	R 2 1/2 - 3	381430RWS	924,00
Pipe threads G parallel, right-hand ISO 228-1 (DIN 259, BSPP)	G 2 1/2 - 3 HSS ¹⁾	381431RHSS	1.500,00
Pipe threads NPT tapered, right-hand Taper Pipe Thread ASME B1.20.1	NPT 2 1/2 - 3 HSS ¹⁾	381432RHSS	1.390,00
Pipe threads NPSM parallel, right-hand Straight Pipe Thread ASME B1.20.1	NPSM 2 1/2 - 3 HSS ¹⁾	381433RHSS	1.500,00



For universal automatic die head 2 1/2 - 4"

Thread type	Size	Art.-No.	KM
Pipe threads R tapered, right-hand ISO 7-1, EN 10226 (DIN 2999, BSPT)	R 2 1/2 - 4	381401RWS	1.400,00
Pipe threads G parallel, right-hand ISO 228-1 (DIN 259, BSPP)	G 2 1/2 - 4 HSS ¹⁾	381405RHSS	2.230,00
Pipe threads NPT tapered, right-hand Taper Pipe Thread ASME B1.20.1	NPT 2 1/2 - 4 HSS ¹⁾	381410RHSS	2.100,00
Pipe threads NPSM parallel, right-hand Straight Pipe Thread ASME B1.20.1	NPSM 2 1/2 - 4 HSS ¹⁾	381415RHSS	2.230,00