

Mobile, handy camera inspection system for inexpensive inspection and damage analysis of pipes, drains, chimneys and other hollow cavities. With electronic metering. Also for inspection after pipe cleaning work and for acceptance of new installations or repairs. Documentation of pictures and videos on SD card. For battery and corded operation.

Camera head	Ø 25 mm
Pipe	Ø (40) 50–150 mm
Drains, chimneys, other cavities	

**REMS CamSys – Brilliant pictures and videos of pipes and drains. SD card slot. Electronic metering. Cordless and mains operation.**

**System advantage**

Only **one** controller unit with TFT-LCD colour display for connecting different camera cable sets for different requirements. Therefore inexpensive conversion possible.

**Design**

Mobile, handy, light. Can be used everywhere, even in very narrow places. Controller unit connected to the camera cable set by a 2 m connecting cable, removable for easy cleaning of the camera cable set. Various camera cable sets can be used. Plug-screw connections for changing the camera cable sets and the controller unit without tools. Sturdy case for controller unit, voltage supply/charger and accessories.

**Controller unit with TFT-LCD colour display**

Controller unit with 3.5" colour display with state of the art TFT-LCD technology for brilliant pictures and videos, 89 mm screen diagonal, 320 x 240 pixels. Very light and handy, only 0.4 kg. Sturdy, impact-proof plastic housing, spray protected. Small dimensions: 172 x 121 x 58 mm. Keys for setting the brightness of the LEDs of the colour camera head. Full screen, 2x zoom, 4x rotation options for the picture. SD card slot. Pictures and videos can be saved on an SD card for simple documentation of the inspection result. Insertion depth of the camera is stored in the picture and the video, optionally also date and time of the recording. Pictures can be taken during video recording without impairing the video recording. Immediate playback of saved recordings or transmission to other devices with SD card. Pictures can also be taken later from the video during playback of recorded videos on the controller's colour display. USB connector for direct connection to PC or laptop. Video output socket Composite-Video PAL/NTSC for connecting an external monitor. Connection for voltage supply/charger Li-Polymer 100–240 V.

**Cordless and mains operation**

Li-Polymer Technology. Controller unit with integrated Li-Polymer battery 3.7V, 4.0 Ah. Light and powerful. Power supply/charger 100–240 V, 15 W, with USB port and USB cable for connecting power supply/charger, laptop or other voltage supply. No memory effect for maximum battery performance.

**High resolution special colour camera**

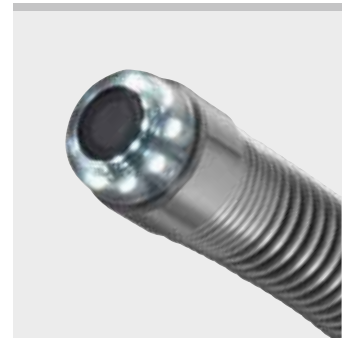
High resolution special colour camera Ø 25 mm with CMOS image sensor and 8 ultra bright, white LEDs with adjustable light intensity up to 1700 mcd and concentrated radiation angle for brilliant colour pictures with even illumination. Low light requirement due to very high light sensitivity (0.1 lux). Fixed focus and special lens with 90° wide angle, also for detecting the smallest details.

**Exchangeable cable camera sets**

Camera cable sets S-Color, consisting of special high-resolution colour camera with optional **30 m push cable Ø 5.4 mm**, flexible, for Ø 50–150 mm, in hasp with electronic metre counter, **20 m push cable Ø 4.5 mm**, very flexible, for small pipe diameters and narrower bends Ø (40) 50–150 mm, in the hasp with electronic metre counter or **10 m push cable Ø 4.5 mm** with length mark, very flexible, for small pipe diameters and narrower pipe bends Ø (40) 50–150 mm, in the cable reel, with connection for controller unit. Very small, rounded camera head Ø 25 mm, water-tight up to 20 m (0.2 MPa/2 bar/29 psi) and highly flexible sliding spring tapered towards the push cable for effortless feeding even through several pipe bends. Camera head with strong, quick-change protective cap with inserted mineral glass pane. Bend-manoeuvring push cable in hybrid technology, with glass fibre core, data cables and plastic sheath, very stable, for long life. Robust, powder-coated, easy to clean cable cage. Hasp with rotary cage for simple unwinding and winding of the push cable and integrated sensor for electronic metering. Carrying case for camera cable set as an accessory.

**Guide bodies**

Various guide bodies for larger pipe diameters, firmly lockable on the camera head, as an accessory.



Info

## Supply format

**REMS CamSys Set S-Color.** Electronic camera inspection system for low-cost inspection and damage analysis. Documentation of pictures and videos on SD card with specification of date and time. Controller unit in microprocessor technology with 3.5" TFT-LCD colour display, SD card slot, USB port, video out socket PAL/NTSC, integrated Li-Polymer battery, 3.7 V, 4.0 Ah, in sturdy, impact-proof plastic housing, spray protected. 2 m connecting cable from the controller unit to the camera cable set, voltage supply/charger 100–240 V, 50–60 Hz, 15 W, SD card 4 GB, USB cable, in sturdy case. Camera cable set S-Color with high resolution special colour camera Ø 25 mm with CMOS image sensor and push cable.

Description	Version	Art.-No.	KM
<b>Set S-Color 10 K</b>	10 m push cable Ø 4.5 mm with length mark, very flexible, in cable reel. For small pipe diameters and narrower pipe bends Ø (40) 50–150 mm, drains, shafts, stacks and other cavities.	175008R220	<b>5.040,00</b>
<b>Set S-Color 20 H</b>	20 m push cable Ø 4.5 mm, very flexible, in the hasp with electronic metre counter. For small pipe diameters and narrower pipe bends Ø (40) 50–150 mm, drains, shafts, stacks and other cavities.	175007R220	<b>6.990,00</b>
<b>Set S-Color 30 H</b>	30 m push cable Ø 5.4 mm, flexible, in the hasp with electronic metre counter. For pipes Ø 50–150 mm, drains, shafts, stacks and other cavities.	175010R220	<b>7.200,00</b>



## Accessories

Description	Art.-No.	KM
<b>REMS CamSys Basic-Pack.</b> Controller unit in microprocessor technology with 3.5" TFT-LCD colour display, SD card slot, USB port, video out socket PAL/NTSC, integrated Li-Polymer battery, 3.7 V, 4.0 Ah, in sturdy, impact-proof plastic housing, spray protected. 2 m connecting cable from the controller unit to the camera cable set, voltage supply/charger 100–240 V, 50–60 Hz, 15 W, SD card 4 GB, USB cable, in sturdy case.	175000R220	<b>2.840,00</b>
<b>Camera cable set S-Color 10 K</b> with high resolution special colour camera Ø 25 mm with CMOS image sensor, 10 m push cable Ø 4.5 mm with length marking, very flexible, with connection for controller unit, in cable reel. For small diameters and narrower pipe bends Ø (40) 50–150 mm.	175305R	<b>2.210,00</b>
<b>Camera cable set S-Color 20 H</b> with high resolution special colour camera Ø 25 mm with CMOS image sensor and 20 m push cable Ø 4.5 mm, flexible, in the hasp with electronic metering and connection for controller unit. For small diameters and narrower pipe bends Ø (40) 50–150 mm.	175306R	<b>4.160,00</b>
<b>Camera cable set S-Color 30 H</b> with high resolution special colour camera Ø 25 mm with CMOS image sensor and 30 m push cable Ø 5.4 mm, flexible, in the hasp with electronic metering and connection for controller unit. For Ø 50–150 mm.	175011R	<b>4.370,00</b>
<b>Guide body Ø 62 mm S-Color/S-Color S,</b> for camera cable set S-Color/S-Color S	175057R	<b>218,00</b>
<b>Guide body Ø 100 mm S-Color/S-Color S,</b> for camera cable set S-Color/S-Color S	175058R	<b>252,00</b>
<b>Protective cap S-Color/S-Color S</b> with mineral glass pane, sealing ring, for camera cable set S-Color/S-Color S	175026R	<b>73,50</b>
<b>Carrying case</b> for camera cable set	175123R	<b>261,00</b>
<b>Case with inlay</b>	175018R	<b>200,00</b>

